



**westchester**  
LIBRARY SYSTEM

Empowering libraries. Empowering communities.

# EVERGREEN HOLDS PROCESS

# Potentials List

- When a hold is placed in Evergreen, the system creates a list of potential items that could fill the hold.
- Evergreen checks those items for anything that should prevent them from filling a hold such as
  - Holdable flag in the item record
  - Hold policy restrictions
  - Patron restrictions

# Eligible Items

- From the potentials list, Evergreen creates a list of items that are eligible to fill the hold
- Two processes are started simultaneously to fill the hold:
  - **Targeting**, which looks for an available item to fill the hold
  - **Opportunistic Capture**, which looks at items being checked in to fill the hold

# Targeting

- Evergreen eligible items that are in the statuses Available or Reshelving
- A single item is targeted to fill the hold and put on the owning library's Holds Pull List
- If the targeted item fills the hold before it is filled by opportunistic capture, the hold will be filled by the targeted item.
- Holds are retargeted every 24 hours after the hold was placed based on the hold request creation timestamp.

# Newly Added Items

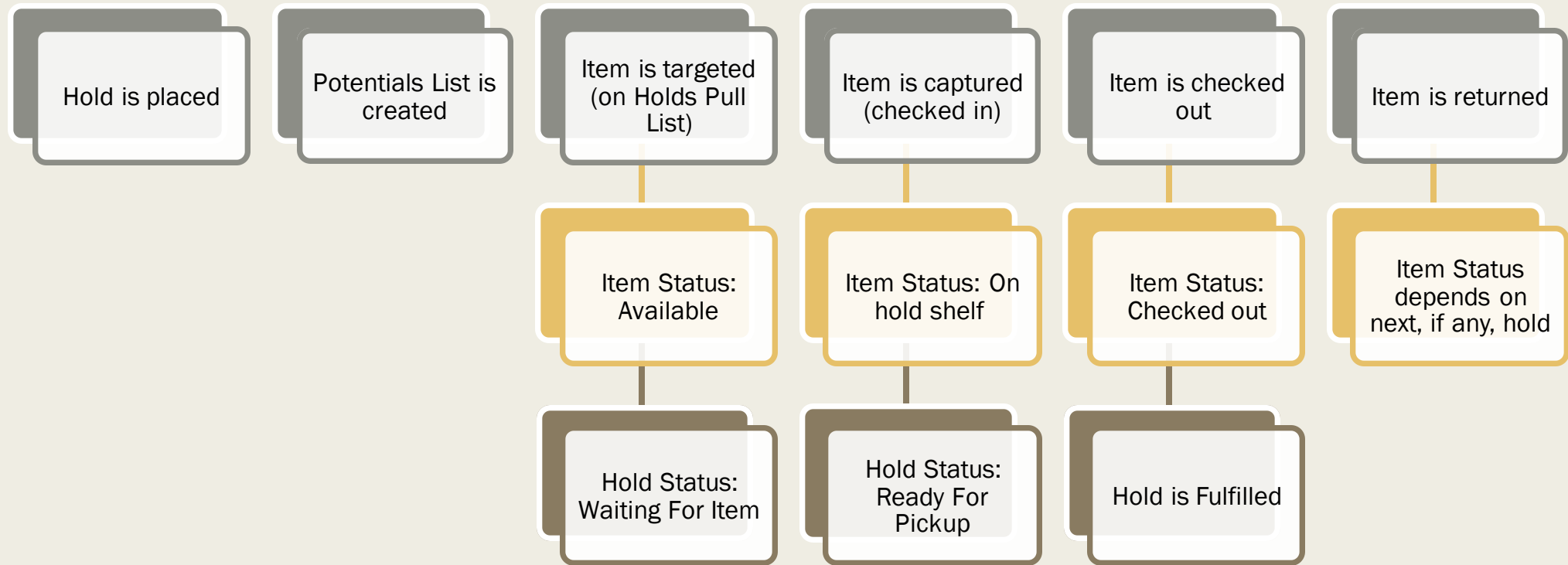
Holds are retargeted every 24 hours after a hold was placed based on the hold request creation *timestamp*.

- It is the *time* of day the hold was placed which influences the time of day the hold request is refreshed to identify available items.
- An item that is added and made available in the afternoon may fill a hold that was placed in the afternoon (based on *time*) instead of a hold that was placed in the morning (based on *date*).

# Opportunistic Capture

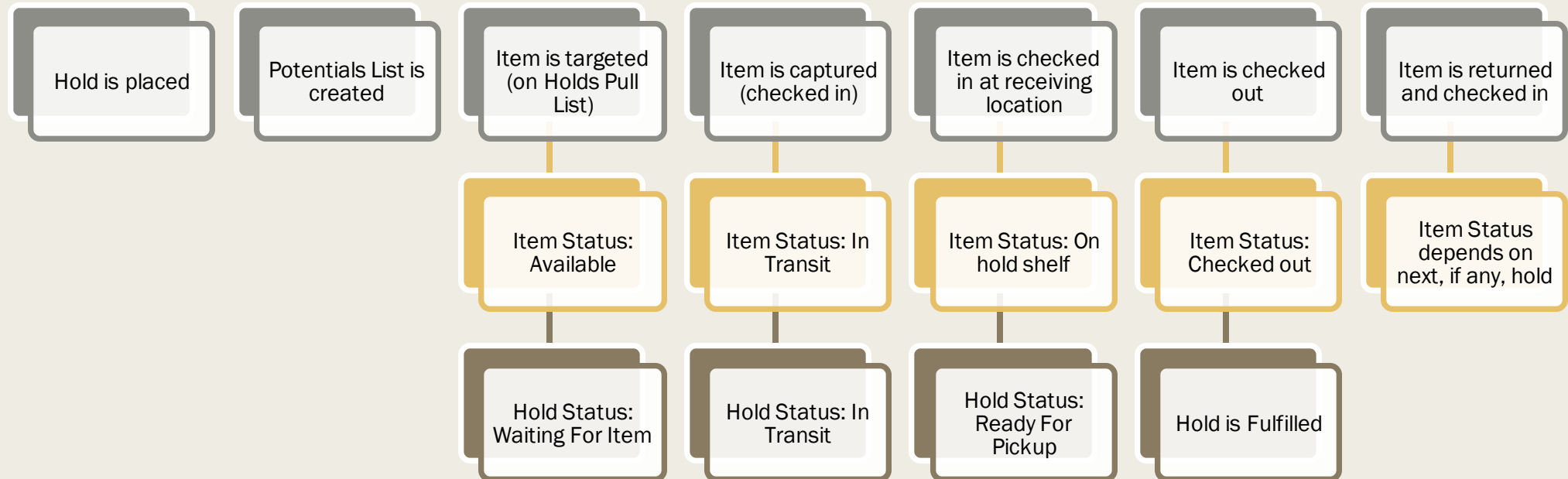
- Evergreen looks for an item to be checked in at the hold Pickup Library
- When an eligible item is checked in at the Pickup Library, that item will fill the hold, as long as the targeted item has not already been captured.

# Local Hold Process: Hold Pickup Location and Item Location Match (the item is at the pickup library)



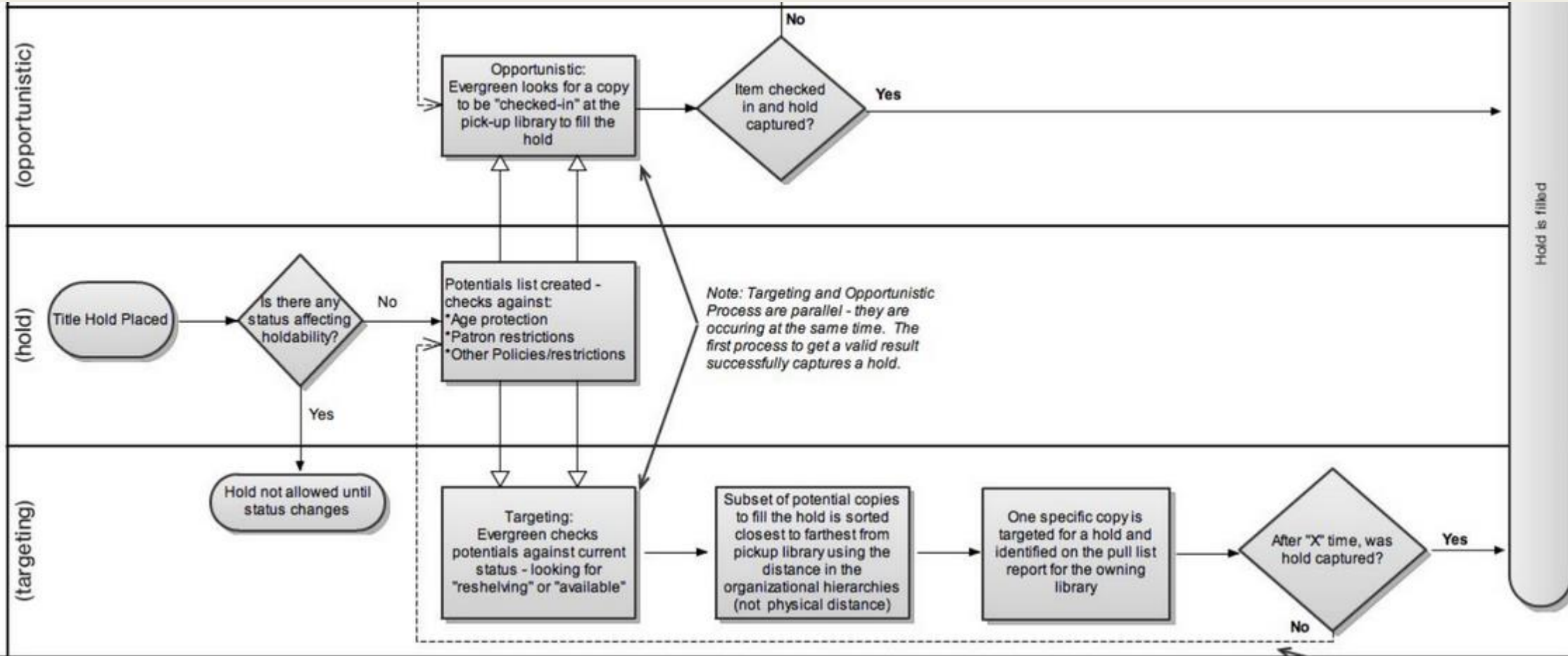
# Remote Hold Process:

## Hold Pickup Location and Item Location Don't Match (the item is filling a hold at another library)





Opportunistic and Targeted Holds with Stallir



# Hold Reports

- Current Unfilled Holds By Patron Library  
see what's waiting for pickup and follow up on unfilled holds
- List Patrons By Pickup Library and Date  
which libraries' patrons are picking up at your library?
- List Patrons With Pending Holds  
Where are your patrons picking up holds?
- Purchase Alerts by Pickup Library  
display title hold/copy ratio by library to aid purchasing
- Purchase Alerts Summary  
display systemwide title hold/copy ratio to aid purchasing

For more information, [Evergreen Hold Essentials](#) on the IT Wiki

Training@wlsmail.org

